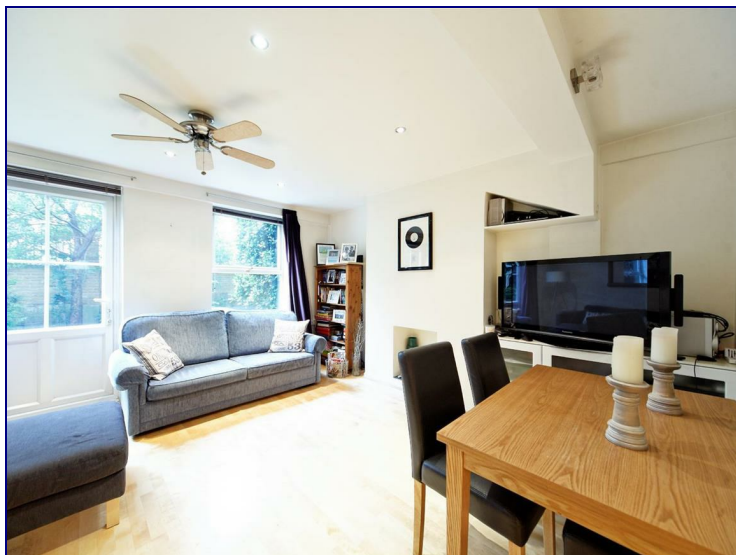


**Milk Yard, London, E1W 3TB**




**£1,500 Per Month**

A light and airy ground floor apartment in the much sought-after development, Riverside Mansions WITH A LOVELY GARDEN SPACE. This complex is located on Milk Yard which is a quiet residential area in Wapping within easy reach of local amenities and excellent transport links. The development benefits from a daytime Building Manager. This building has a newly equipped private residents gym and a private laundry as well as full CCTV. The property is located in central Wapping, minutes walk from Wapping Overground and Shadwell DLR.

**CALL NOW TO AVOID DISAPPOINTMENT!**



Energy Efficiency Rating		
	Current	Potential
<i>Very energy efficient - lower running costs</i>		
(92 plus) <b>A</b>		
(81-91) <b>B</b>		
(69-80) <b>C</b>		
(55-68) <b>D</b>		
(39-54) <b>E</b>		
(21-38) <b>F</b>		
(1-20) <b>G</b>		
<i>Not energy efficient - higher running costs</i>		
<b>England &amp; Wales</b>	EU Directive 2002/91/EC	

Environmental Impact (CO <sub>2</sub> ) Rating		
	Current	Potential
<i>Very environmentally friendly - lower CO2 emissions</i>		
(92 plus) <b>A</b>		
(81-91) <b>B</b>		
(69-80) <b>C</b>		
(55-68) <b>D</b>		
(39-54) <b>E</b>		
(21-38) <b>F</b>		
(1-20) <b>G</b>		
<i>Not environmentally friendly - higher CO2 emissions</i>		
<b>England &amp; Wales</b>	EU Directive 2002/91/EC	